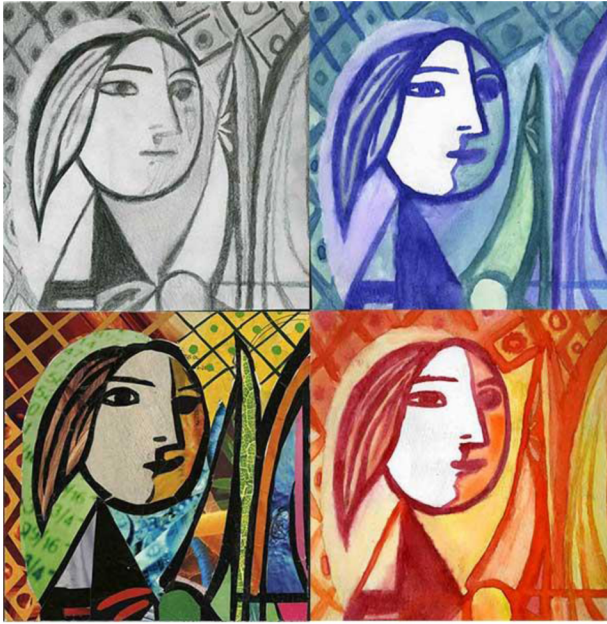


Four Panel Color Theory



This project will incorporate many different mediums and types of color choices. You will first choose your subject matter, then decide on four different color schemes and four different mediums. Once you decide, draw your images on 6"x6" pieces of paper: you may use a light table to help you transfer the images.

Color schemes/choices: PICK 4

Grayscale - The various tints and shades of gray.

Monochromatic - A single hue in a color palette that is expanded upon by adding variations in lightness and saturation to create a balanced look.

Analogous - Groups of colors that are adjacent to each other on the color wheel.

Complementary - Colors that are opposite from each other on the color wheel.

Warm colors - Reds, Oranges and Yellows.

Cool colors - Blues, greens and purples.

Media Choices: PICK 4

-Graphite Pencil

-Colored Pencils

-Markers

-Watercolors/ inks

-Acrylic paint

-Collage (using magazines and fadeless colored paper)

-Digital (using your iPad or desktop computer)

Challenge: Select a portion of a famous painting as your subject matter for this project, like the Picasso featured above! (from Picasso's *Girl before a mirror*, 1932)

Additional resources:



Claude Monet, *Haystacks* 1890-1891

Look at the different ways Monet used color to depict the time of day and season. What kind of color schemes do you notice?



Look at how Andy Warhol uses different color combinations in his 1962 artwork *Marilyn Diptych*. Some squares use cool colors, others warm colors, some analagous and others that are close to monochromatic.